

Fig. 5.1: KEY TO THE CODING OF BUILDING PLANS



-- Cooking area

KI = Kitchen    HE = Hearth    ST = Stove  
 LO = Large oven    SO = Small oven  
 BZ = Brazier    CS = Cooking supports or cooking stand  
 WH = Water heater



-- Dining area

DR = Dining room    DH = Dining hall    DI = Dinette  
 DO = Dining area (open-air)    DB = Dining benches

Codes for amenities and points of special interest:

SG = Storage area

WS = Water source

LT = Latrine

sc = Location of sculpture or  
bases for sculpture

CL = Cult area, evidence of ritual

Degrees of confidence in identifying the above cooking areas, dining areas, amenities and points of special interest:

&lt;no code&gt; = Secure identification

• = Probable identification

◇ = Possible identification

e.g. KI = "Secure kitchen"; DR• = "Probable dining room";

DI◇ = "Possible dinette"; CL◇ = "Possible cult area"

Conventions for identifying rooms and street entrances:

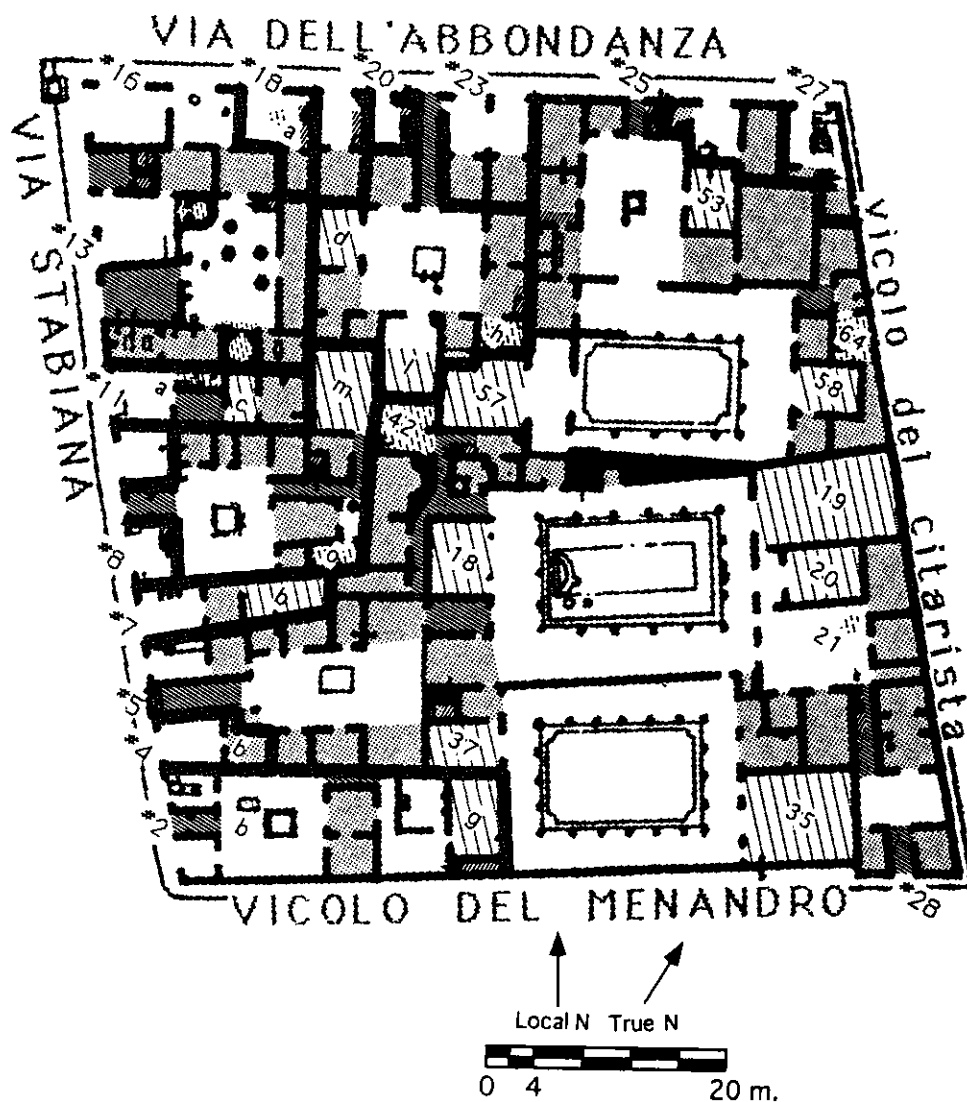
[ ] = Square brackets for a room number *below* the ground floor.{ } = Braces for a room number *above* the ground floor.

# = The number of a street entrance, indicating the building's address.



= Arrow indicates the upwards direction for steps and staircases.

I.4

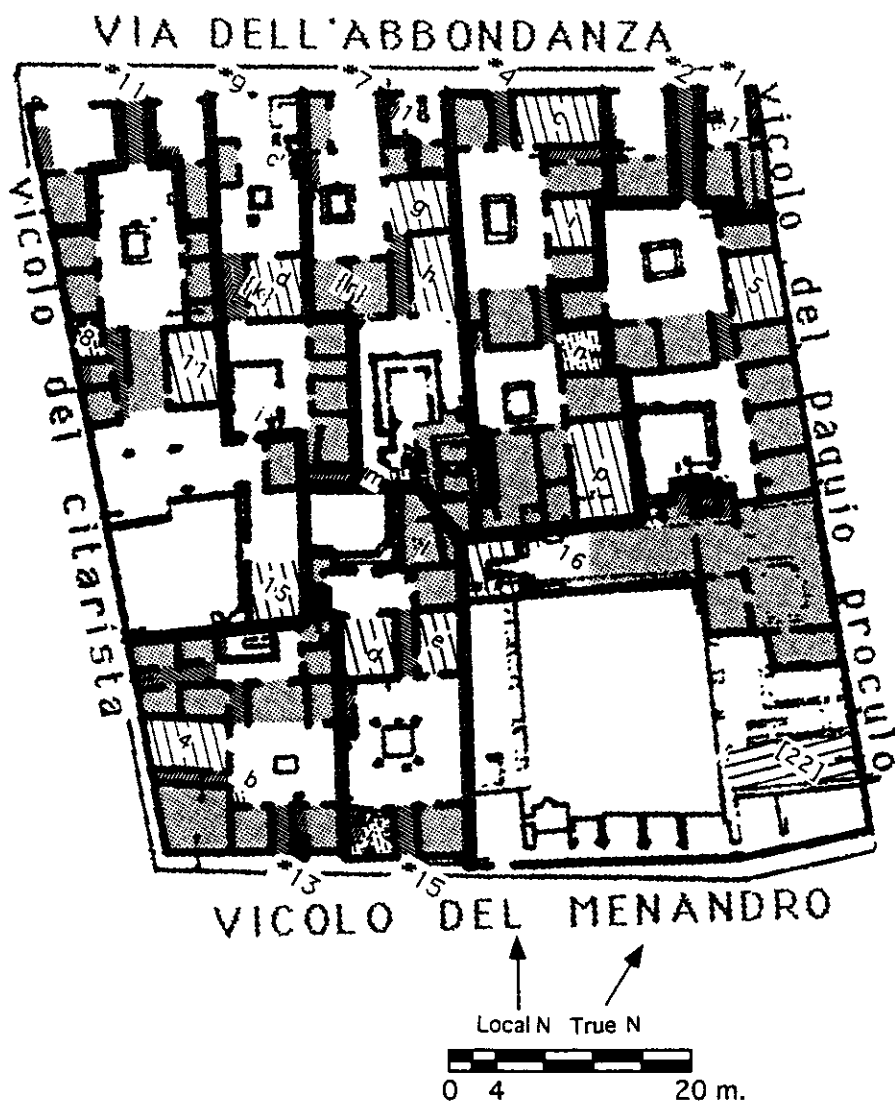


- Property lines
- ▨ Dining area
- ▩ Kitchen or cooking area with portable devices
- ▧ Horizontal connectors (corridors, entranceways)
- ▦ Vertical connectors (stairways)
- ▤ Static spaces (individual closed rooms)
- Nodes (atria, courts, gardens, peristyles)

5.2

Ground floor insula plan showing the nodes, connectors, and static spaces in I.4 (after CTP III).

I.6

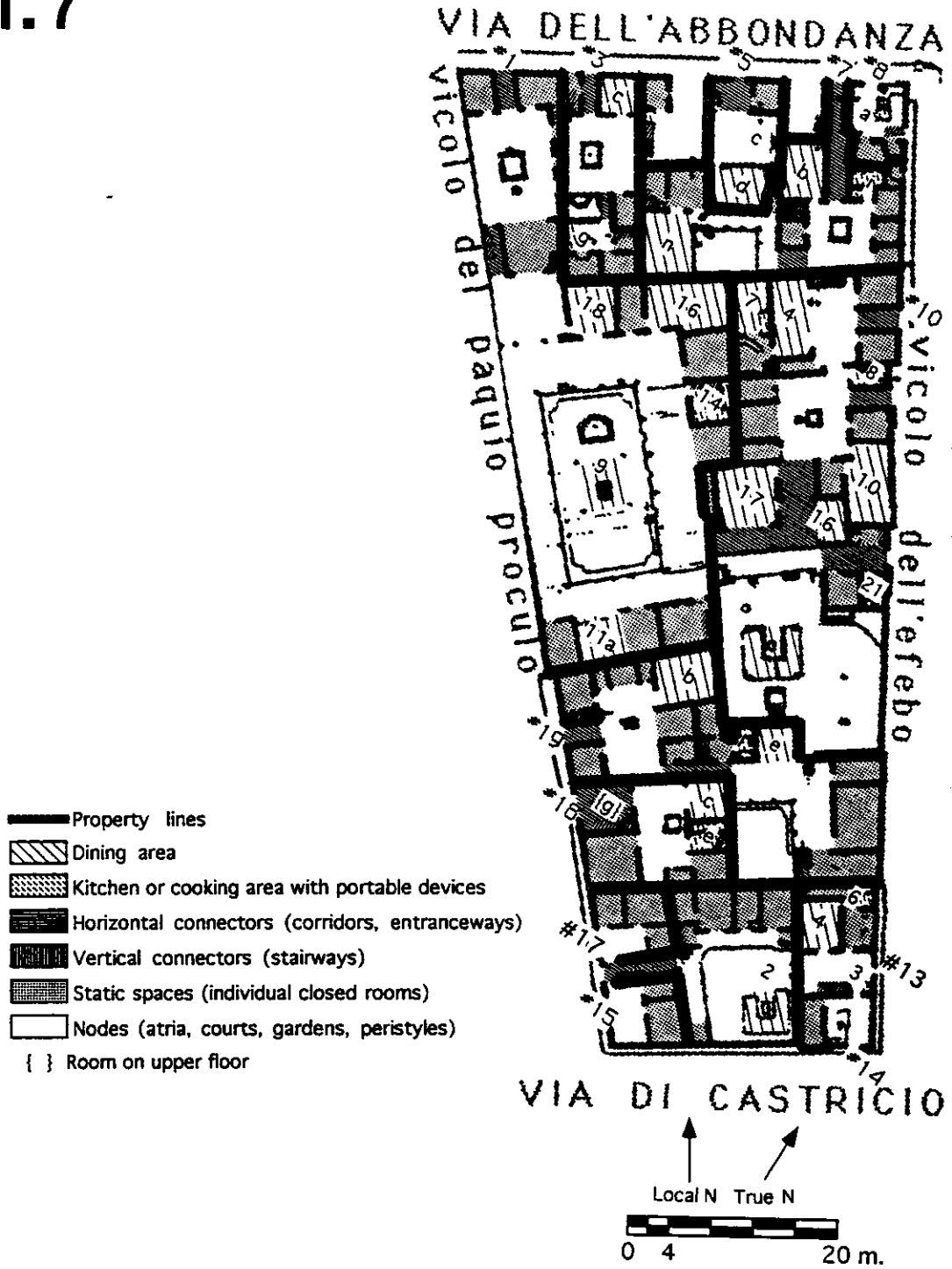


- Property lines
- ▨ Dining area
- ▩ Kitchen or cooking area with portable devices
- ▧ Horizontal connectors (corridors, entranceways)
- ▦ Vertical connectors (stairways)
- ▤ Static spaces (individual closed rooms)
- Nodes (atria, courts, gardens, peristyles)
- [ ] Underground room    { } Room on upper floor

5.3

Ground floor insula plan showing the nodes, connectors, and static spaces in I.6 (after CTP III).

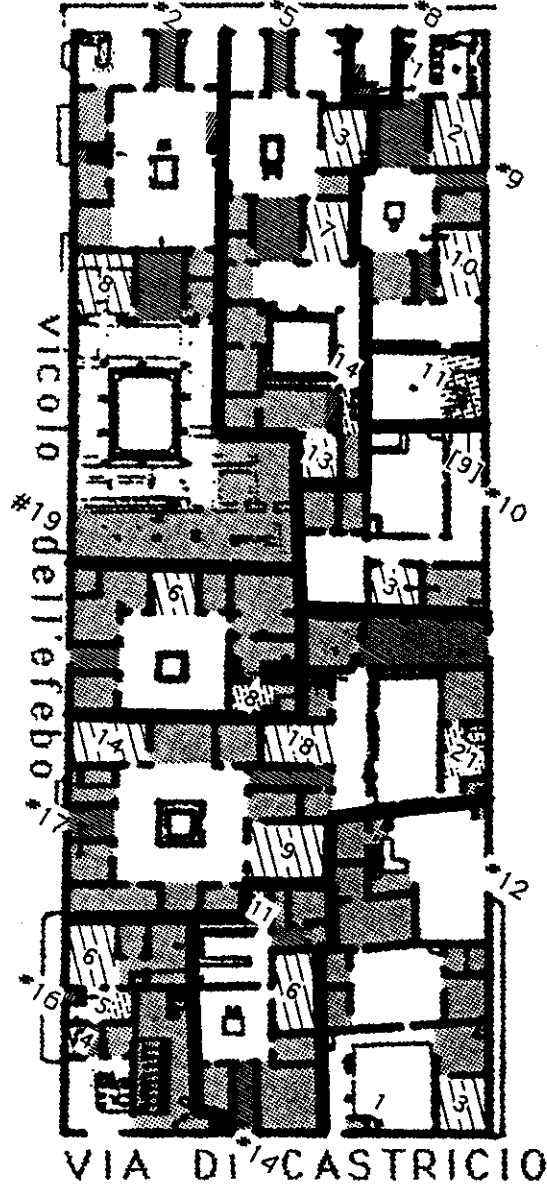
# 1.7



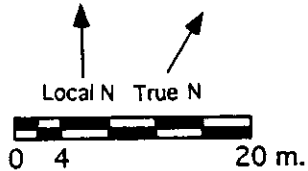
5.4 Ground floor insula plan showing the nodes, connectors, and static spaces in I.7 (after CTP III).

I.8

VIA DELL'ABBONDANZA



- Property lines
- Dining area
- Kitchen or cooking area with portable devices
- Horizontal connectors (corridors, entranceways)
- Vertical connectors (stairways)
- Static spaces (individual closed rooms)
- Nodes (atria, courts, gardens, peristyles)
- [ ] Underground room

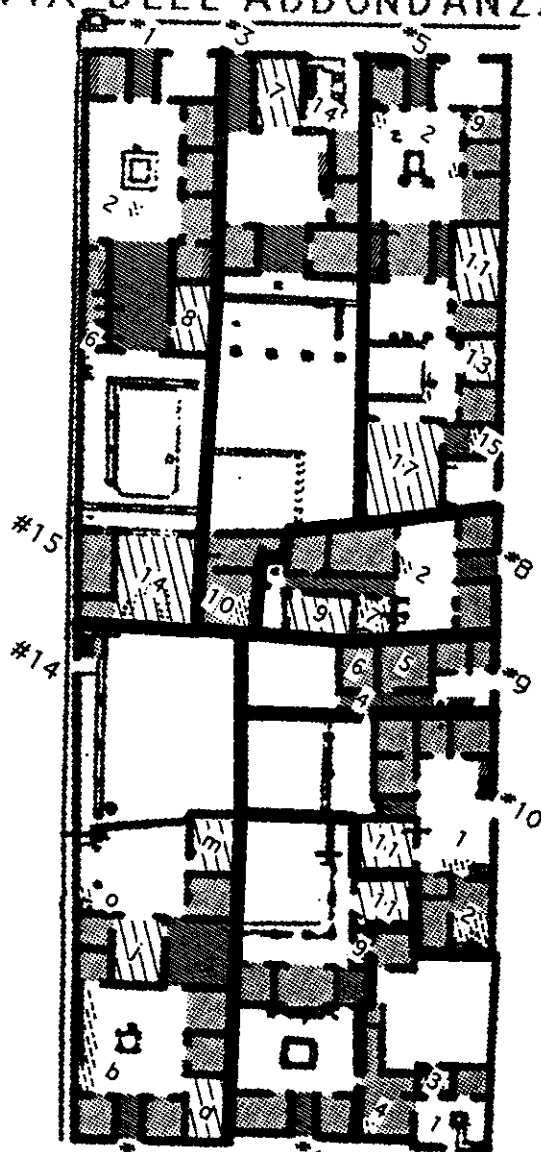


5.5

Ground floor insula plan showing the nodes, connectors, and static spaces in I.8 (after CTP III).

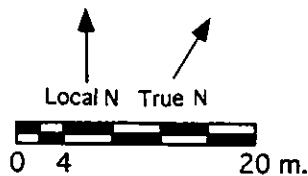
1.9

VIA DELL'ABBONDANZA



VIA DI CASTRICIO

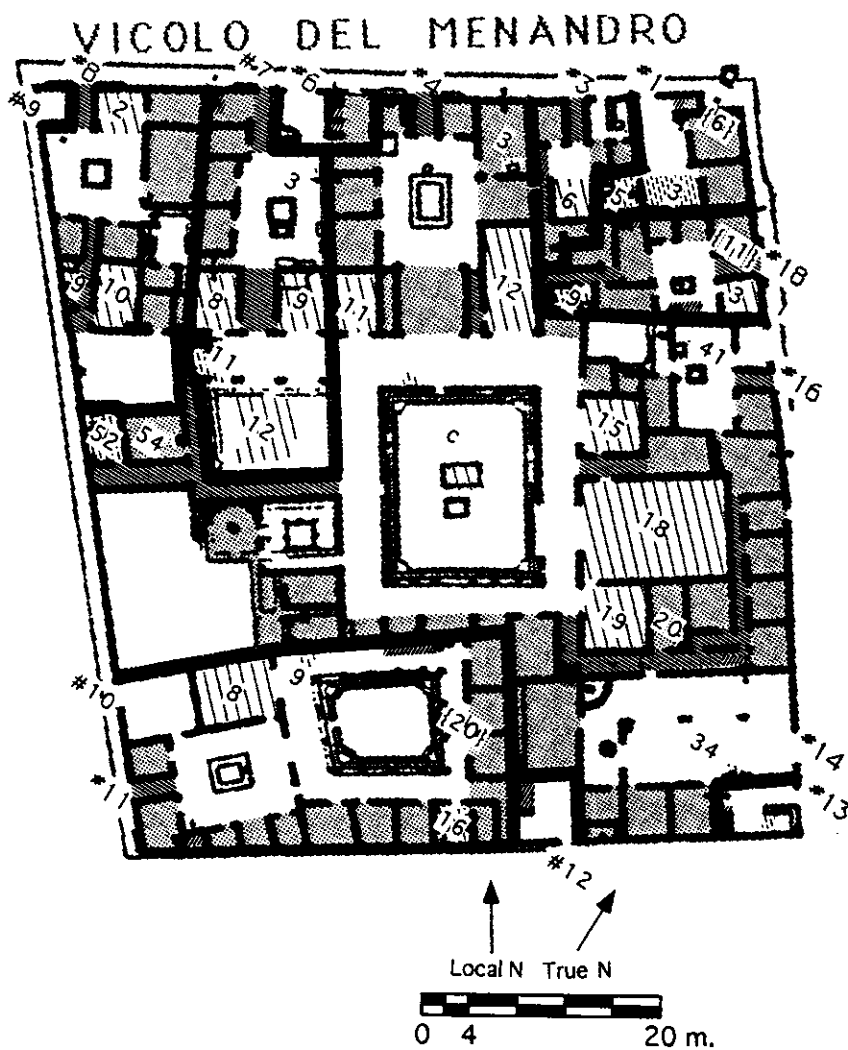
- Property lines
- ▨ Dining area
- ▩ Kitchen or cooking area with portable devices
- ▧ Horizontal connectors (corridors, entranceways)
- ▦ Vertical connectors (stairways)
- ▤ Static spaces (individual closed rooms)
- Nodes (atria, courts, gardens, peristyles)



5.6

Ground floor insula plan showing the nodes, connectors, and static spaces in 1.9 (after CTP III).

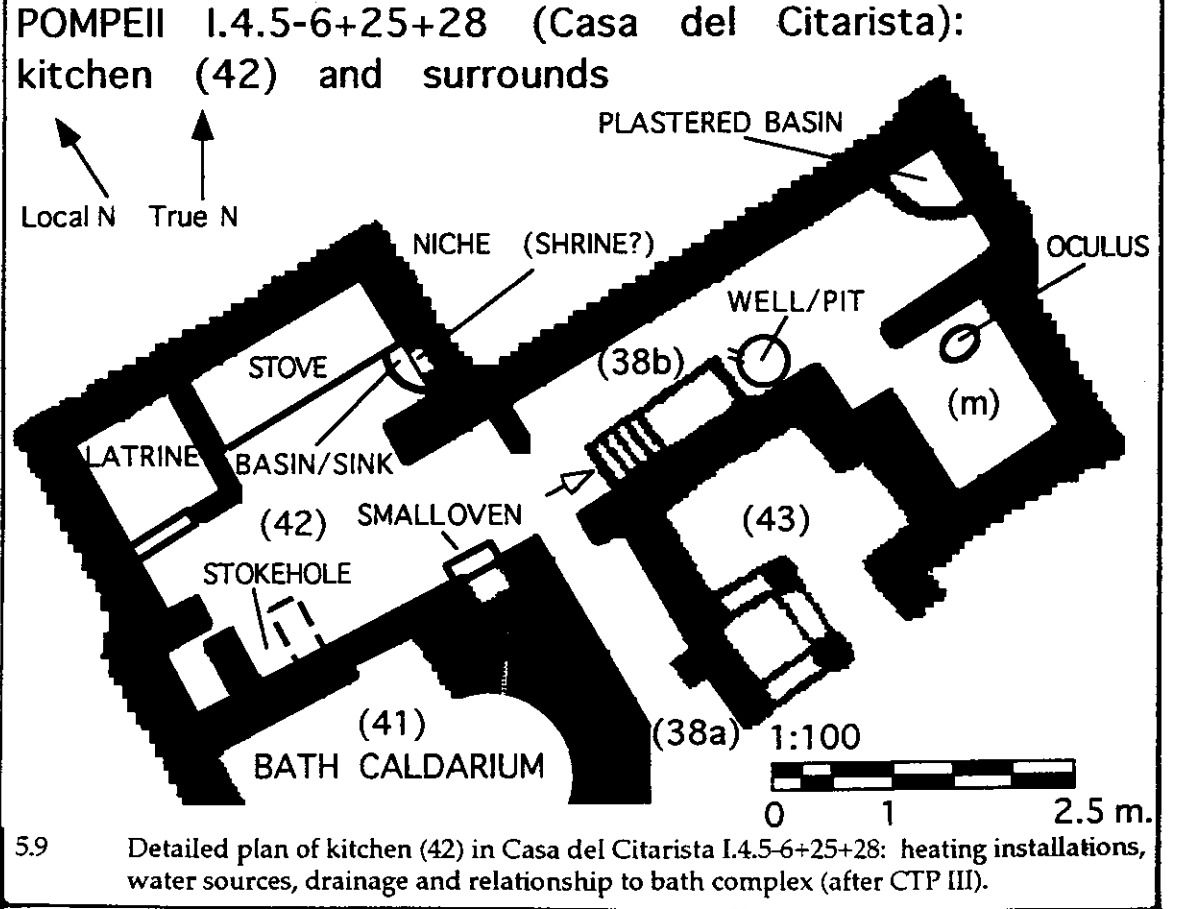
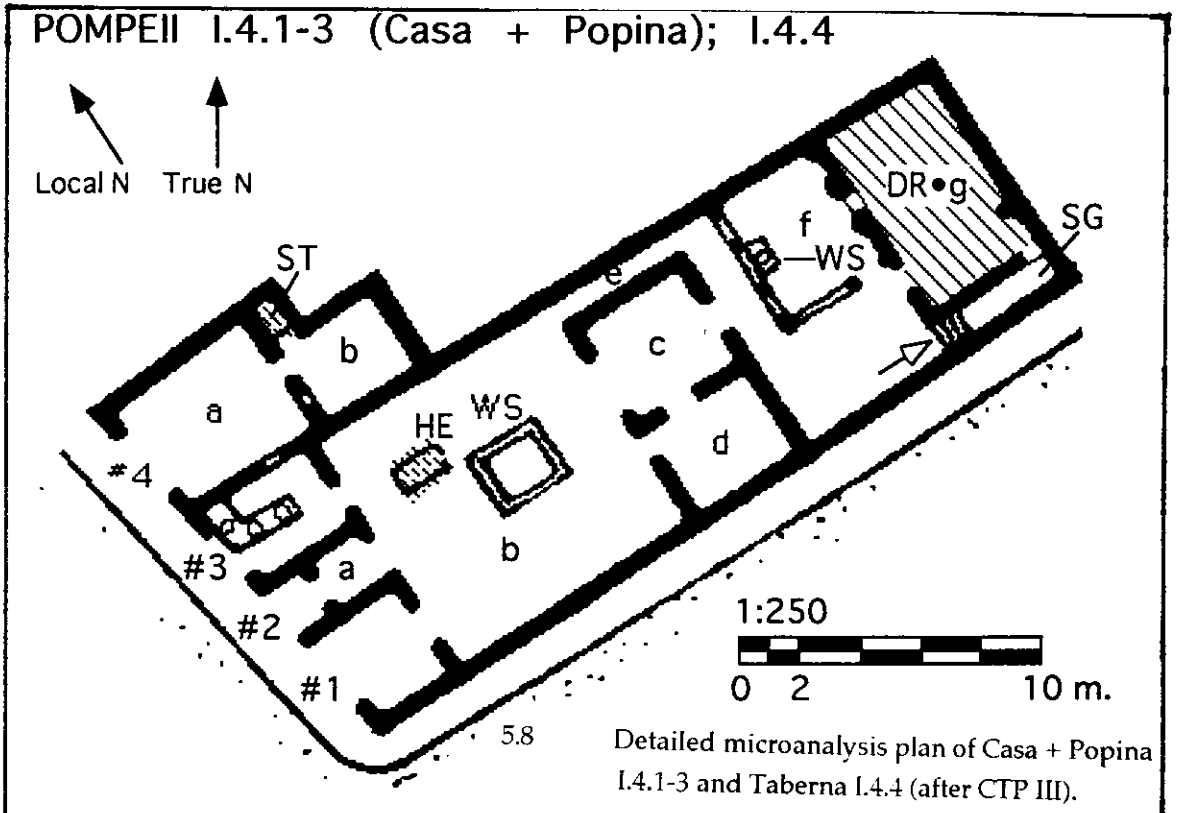
## I.10



- Property lines
- ▨ Dining area
- ▩ Kitchen or cooking area with portable devices
- ▬ Horizontal connectors (corridors, entranceways)
- ▮ Vertical connectors (stairways)
- ▧ Static spaces (individual closed rooms)
- Nodes (atria, courts, gardens, peristyles)
- { } Room on upper floor

5.7

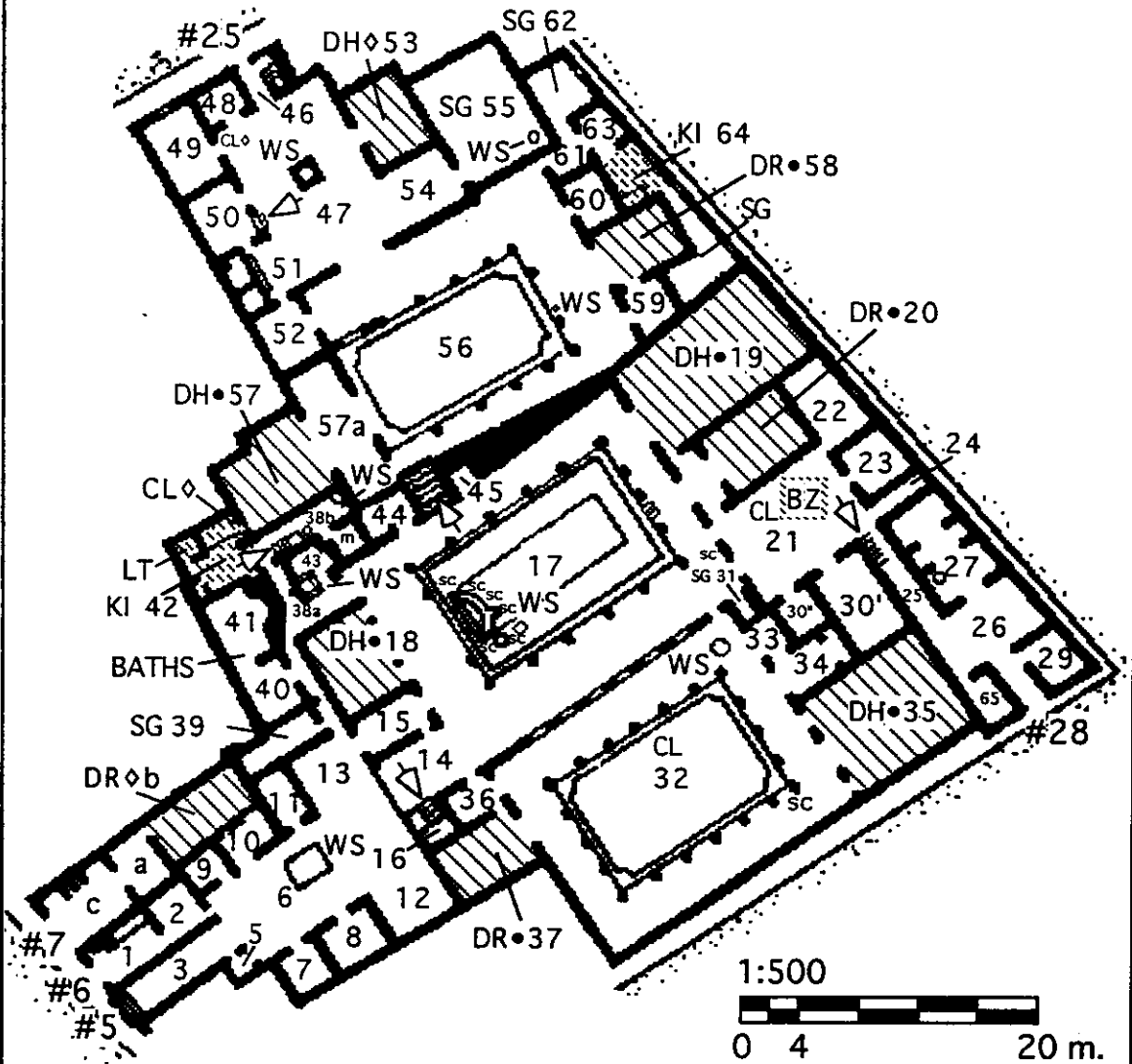
Ground floor insula plan showing the nodes, connectors, and static spaces in I.10 (after CTP III).





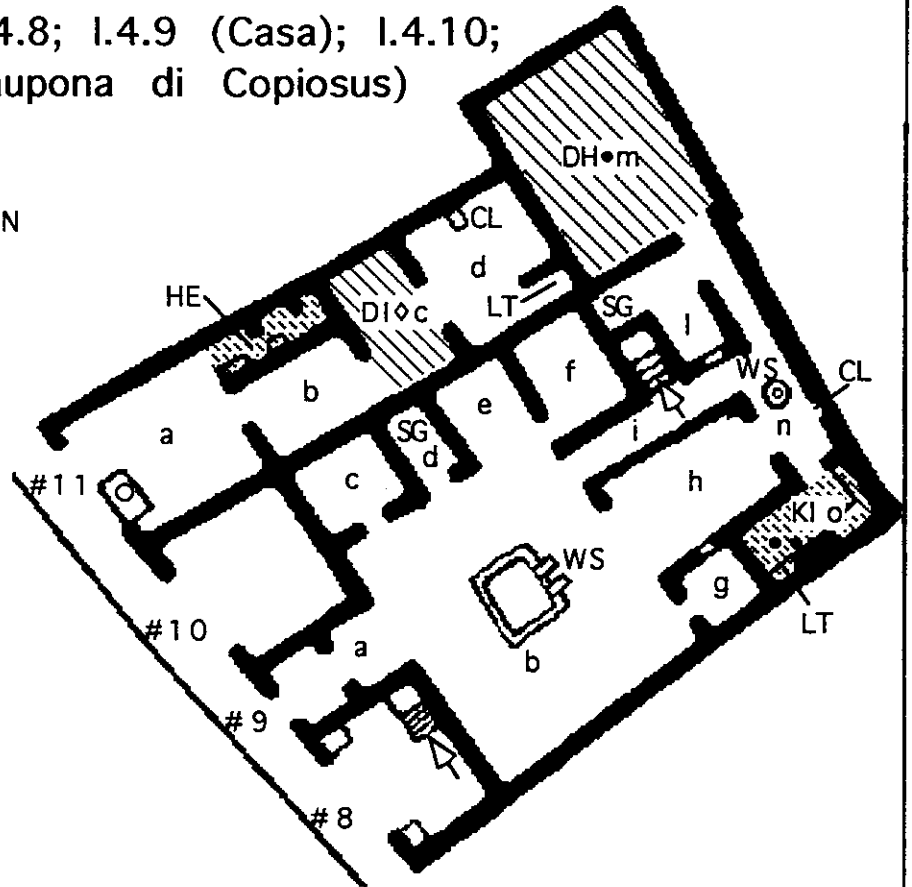
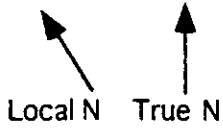
POMPEII I.4.5-6+25+28 (Casa del Citarista); I.4.7

Local N True N



5.10 Detailed microanalysis plan of Casa del Citarista I.4.5-6+25+28 and Fullonica di Passaratus e Maenianus I.4.7 (after CTP III).

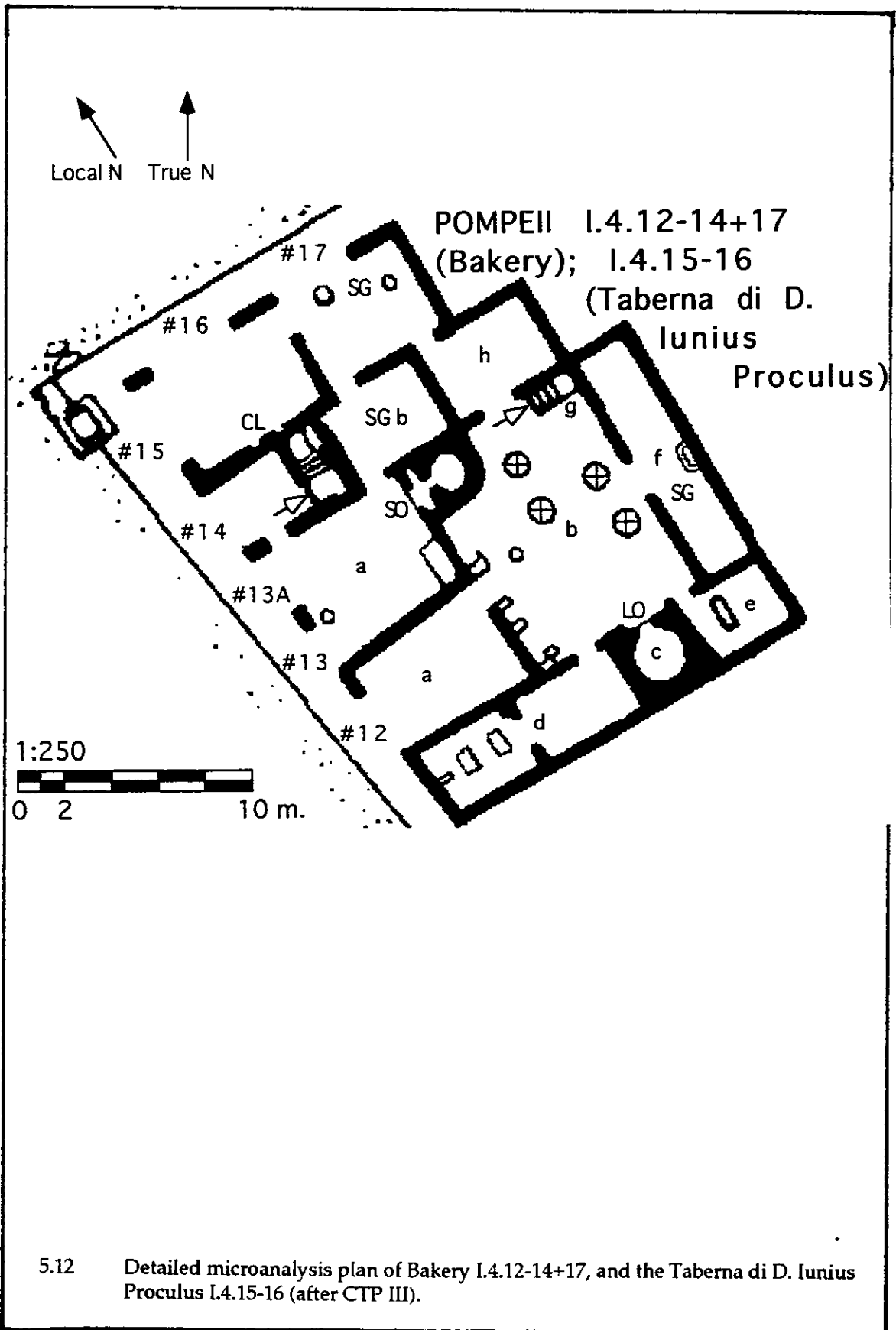
POMPEII I.4.8; I.4.9 (Casa); I.4.10;  
I.4.11 (Caupona di Copiosus)

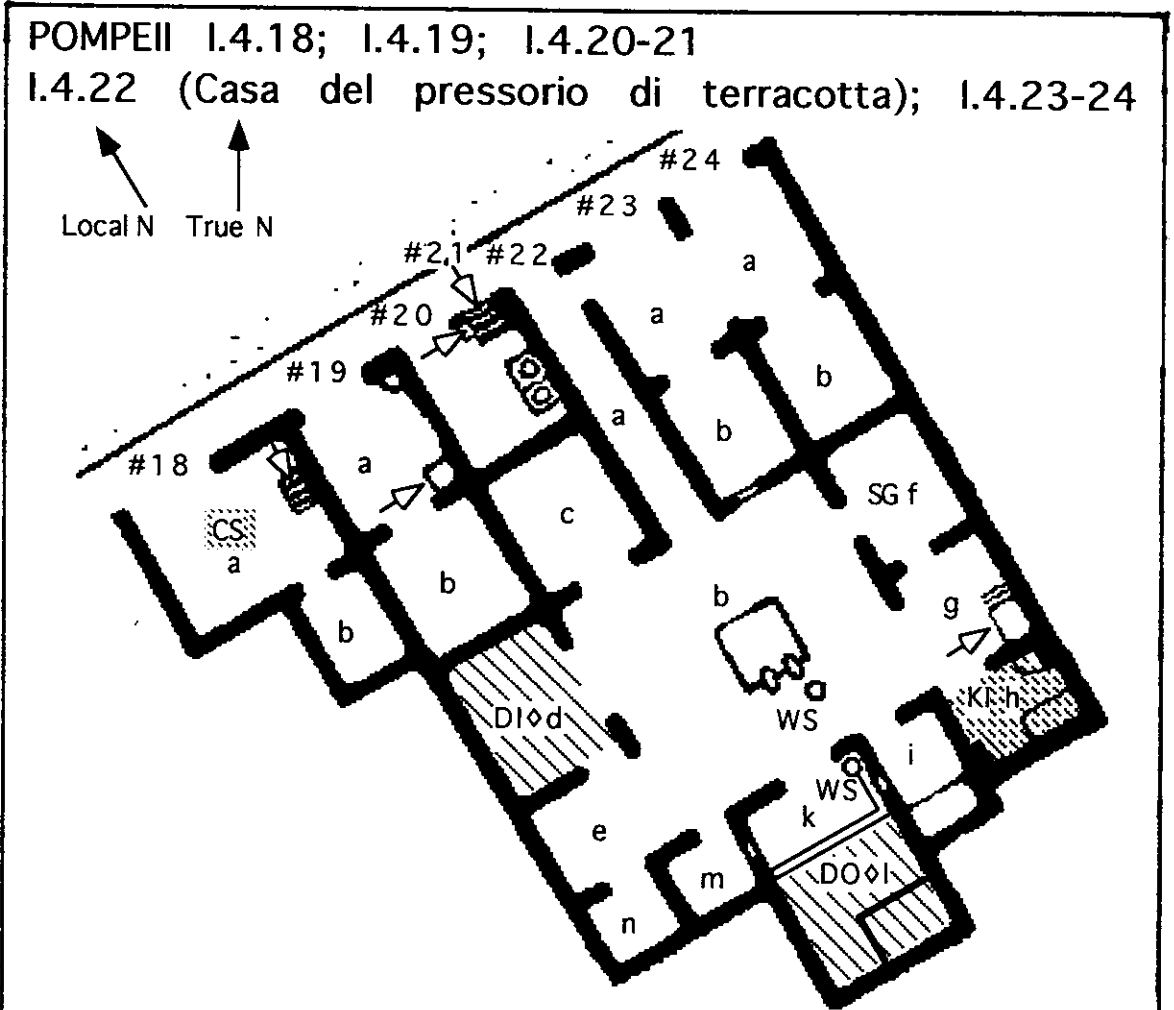


1:250



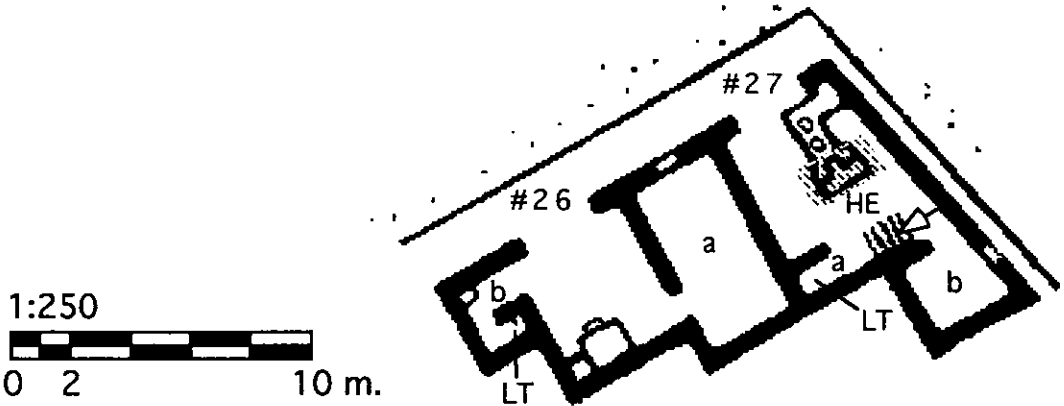
5.11 Detailed microanalysis plan of Casa I.4.9, Tabernae I.4.8, I.4.10 and the Caupona di Copiosus I.4.11 (after CTP III).



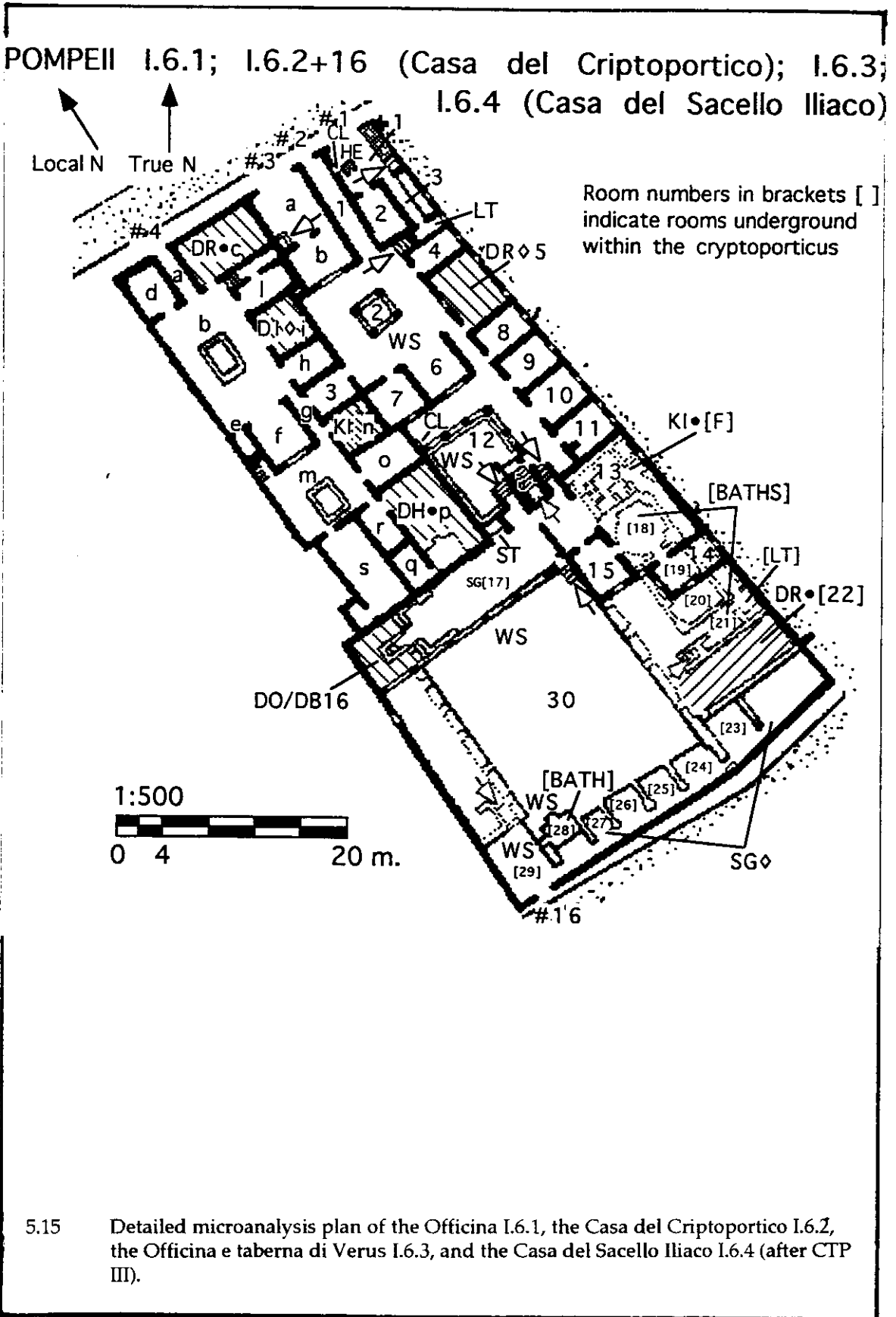


5.13 Detailed microanalysis plan of Tabernae I.4.18, I.4.19, I.4.20-21, I.4.23-24 and the Casa del pressorio di terracotta I.4.22 (after CTP III).

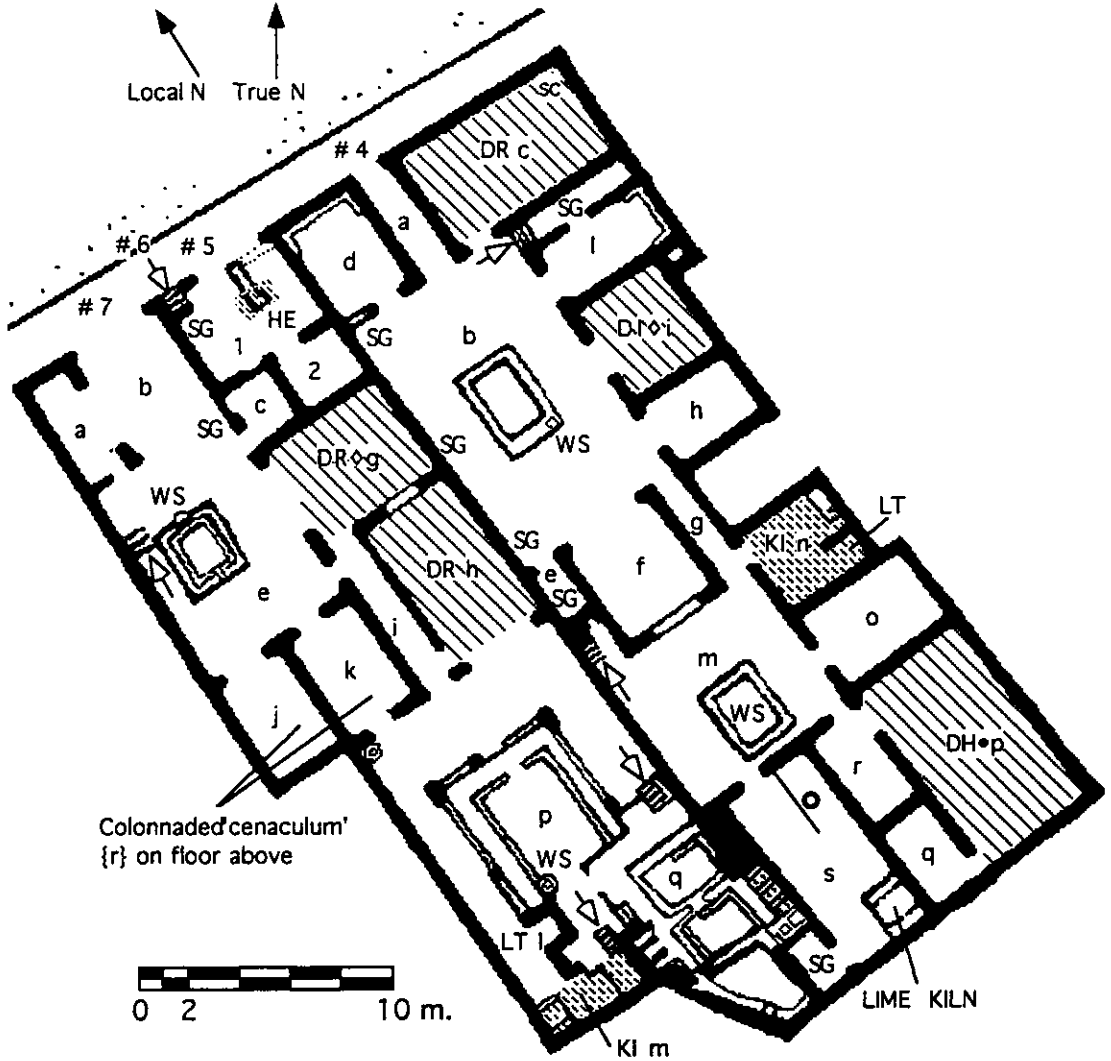
POMPEII I.4.26 (Fullonica di Dionysios); I.4.27



5.14 Detailed microanalysis plan of the Fullonica di Dionysios I.4.26, and the Popina I.4.27 (after CTP III).

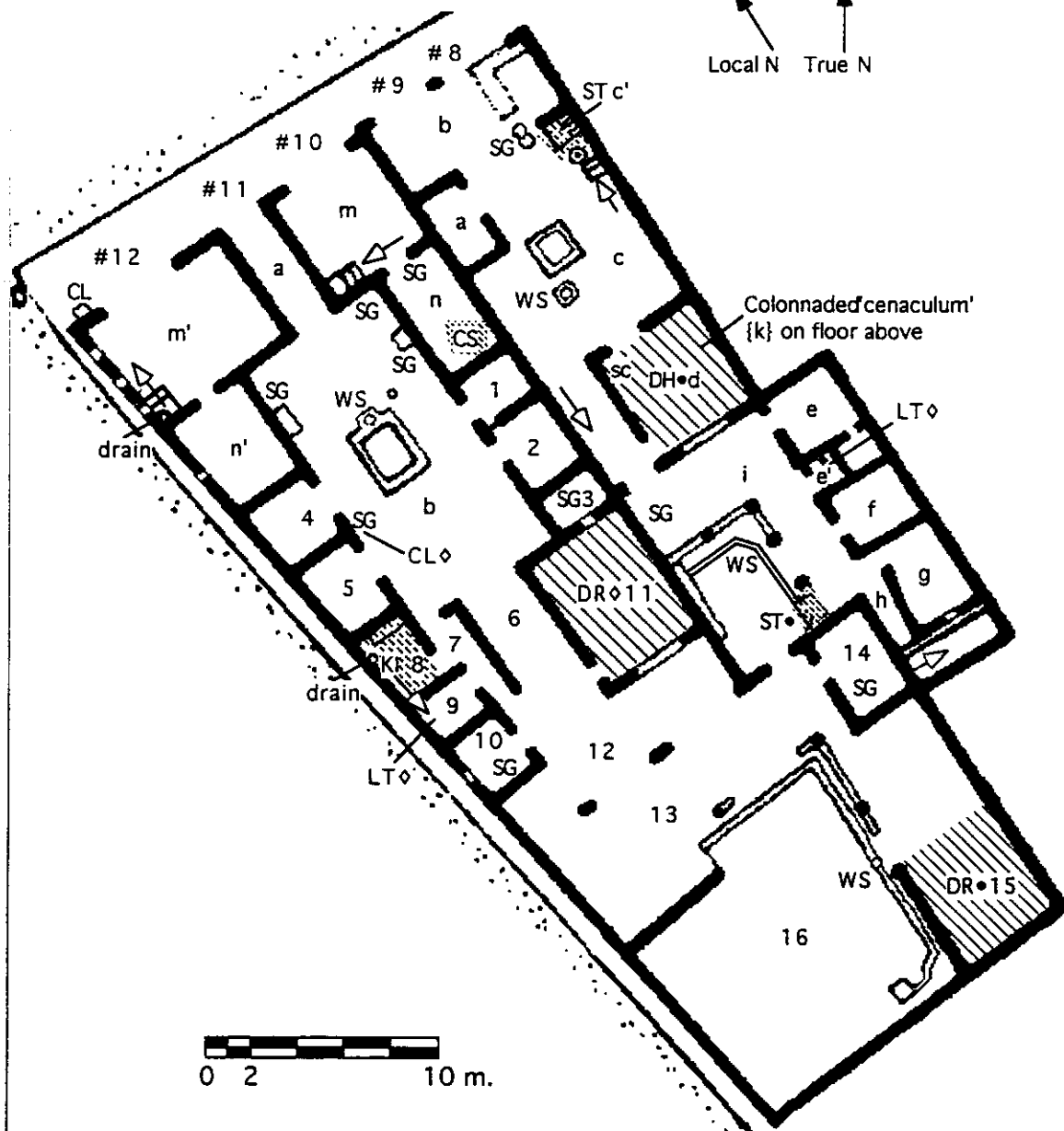
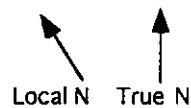


POMPEII I.6.4 (Casa del Sacello Iliaco); I.6.5-6;  
I.6.7 (Fullonica di Stephanus)



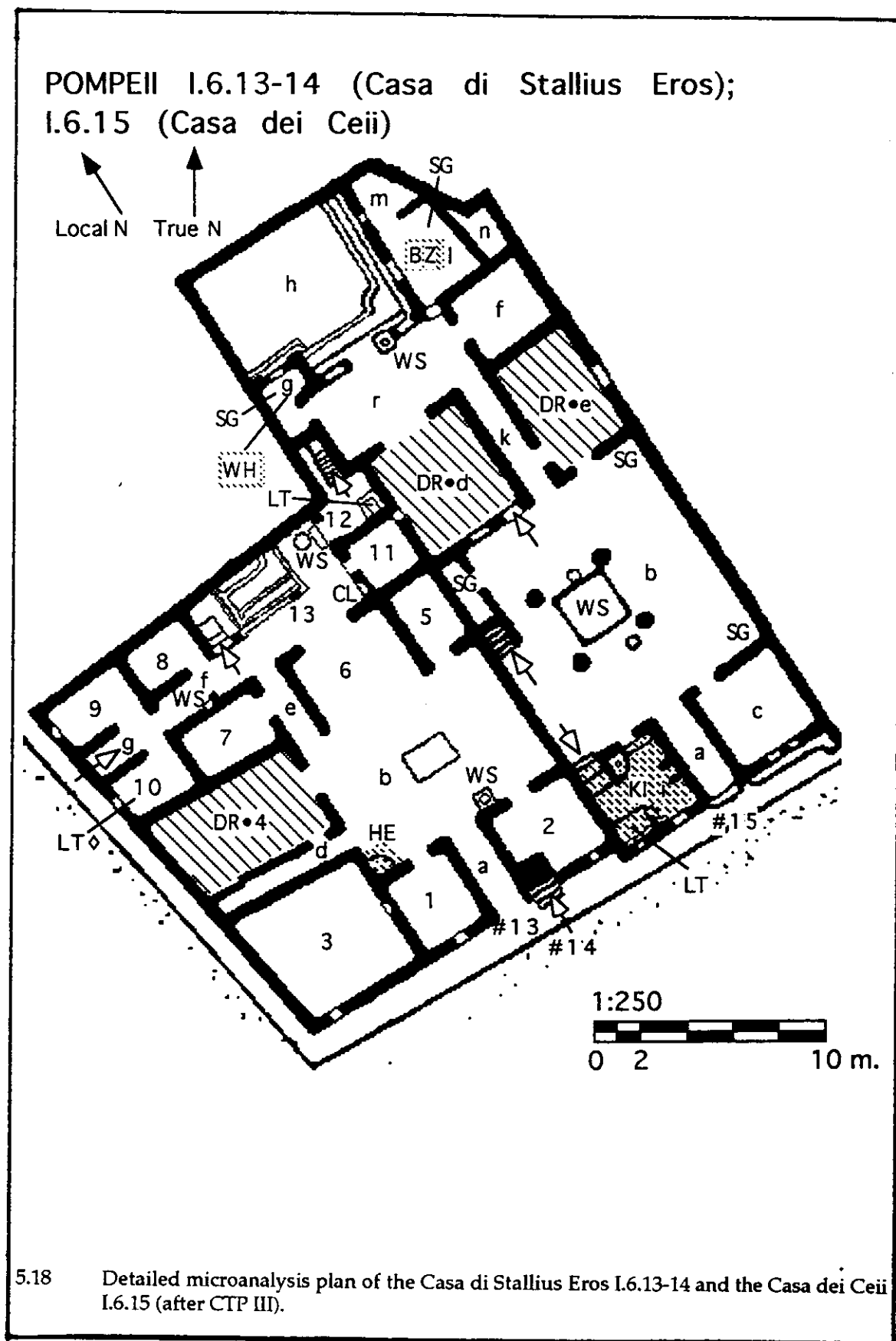
5.16 Detailed microanalysis plan of the Casa del Sacello Iliaco I.6.4, Popina I.6.5-6, and the Fullonica di Stephanus I.6.7 (after CTP III).

POMPEII I.6.8-9 (Casa); I.6.10;  
I.6.11 (Casa del Quadretti Teatrali); I.6.12

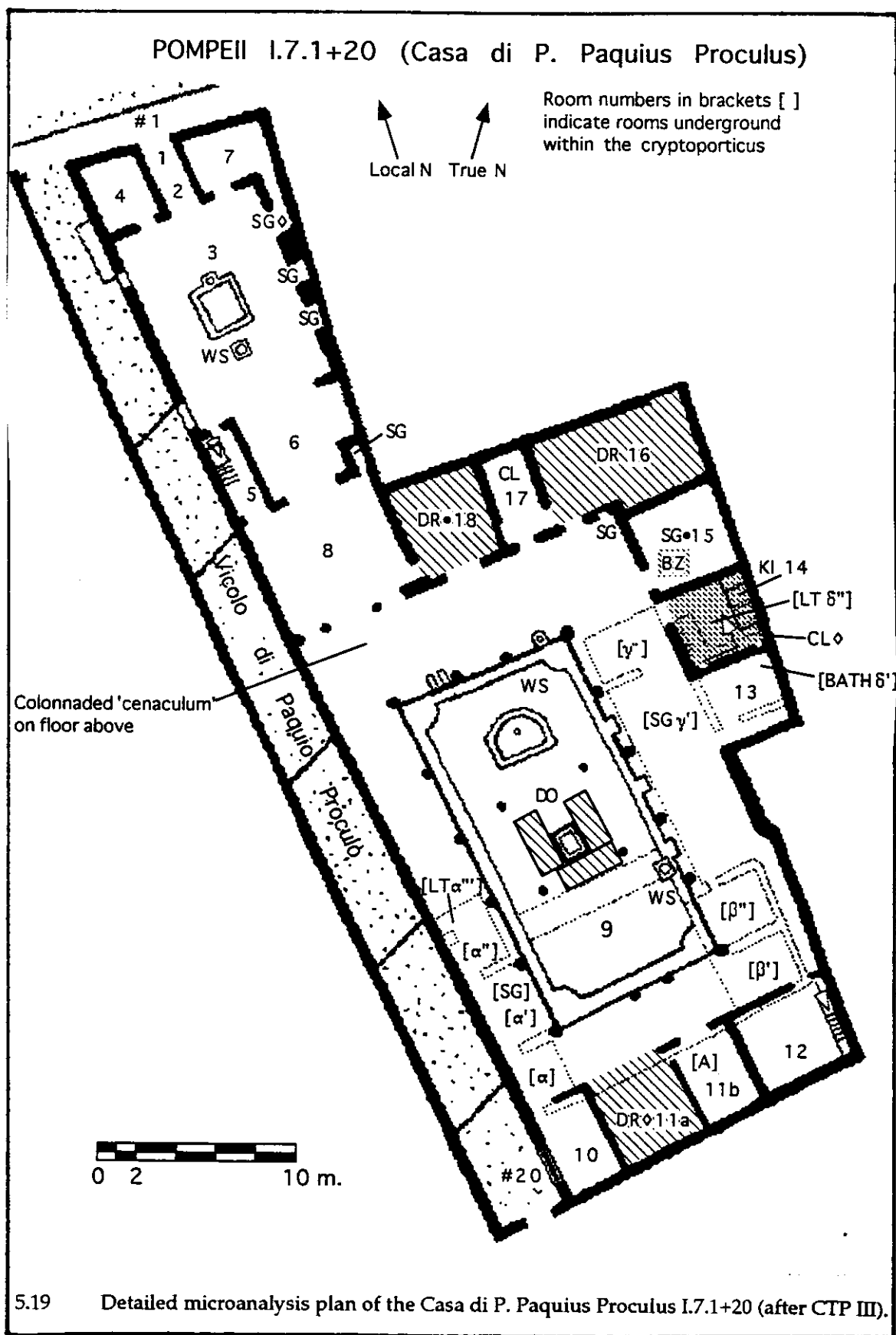


5.17

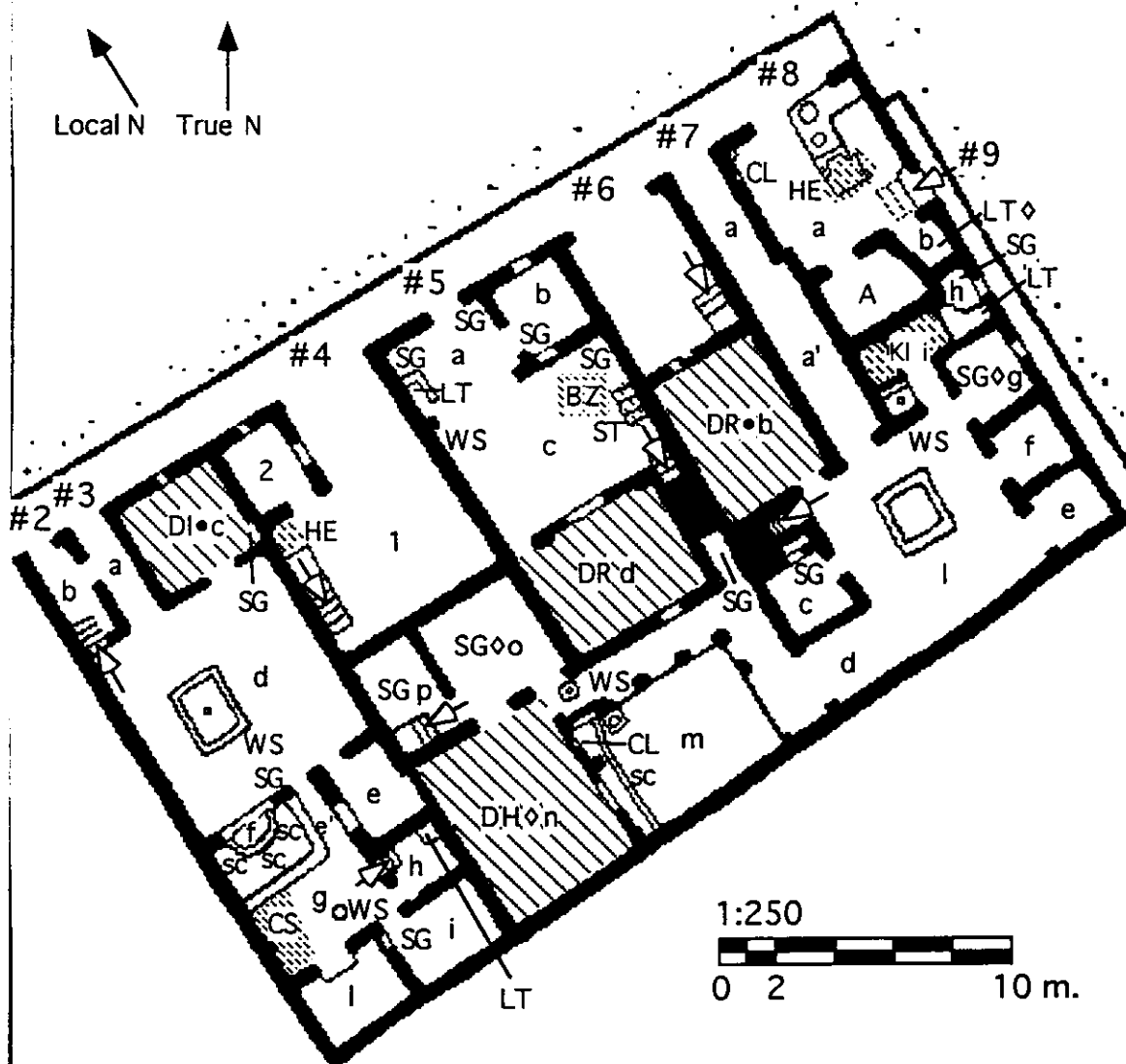
Detailed microanalysis plan of Casa + Caupona I.6.8-9, Taberna I.6.10, the Casa dei Quadretti Teatrali I.6.11, and the Taberna del faber ferrarius Iunianus I.6.12 (after CTP III).







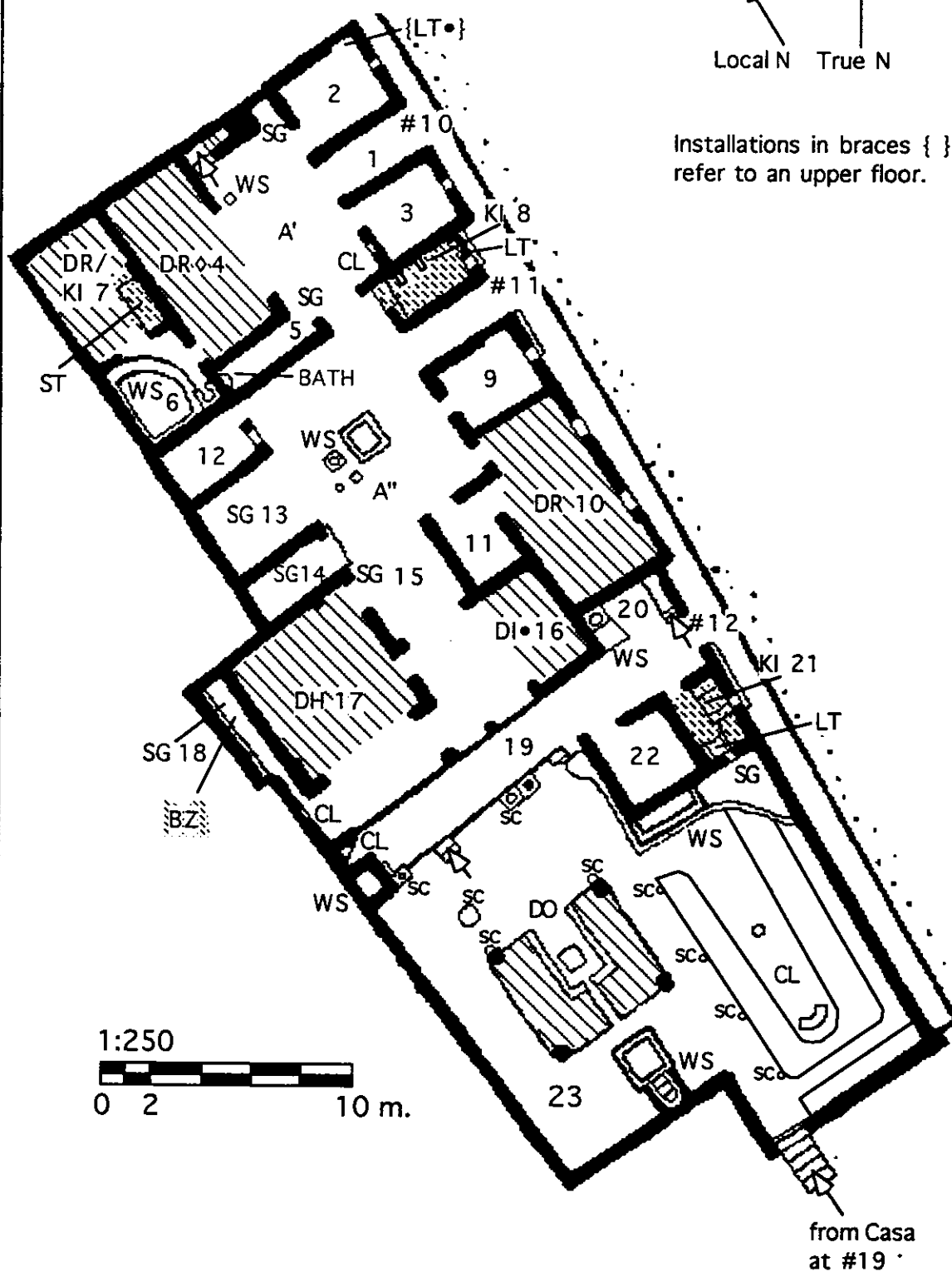
POMPEII I.7.2-3 (Casa di M. Fabius Amandus);  
 I.7.4 (Officina Vasaria di Corinthus); I.7.5 (Casa di  
 Philippus); I.7.6 (Taberna di Primilla); I.7.7 (Casa del  
 Sacerdos Amandus); I.7.8-9 (Popina)



5.20

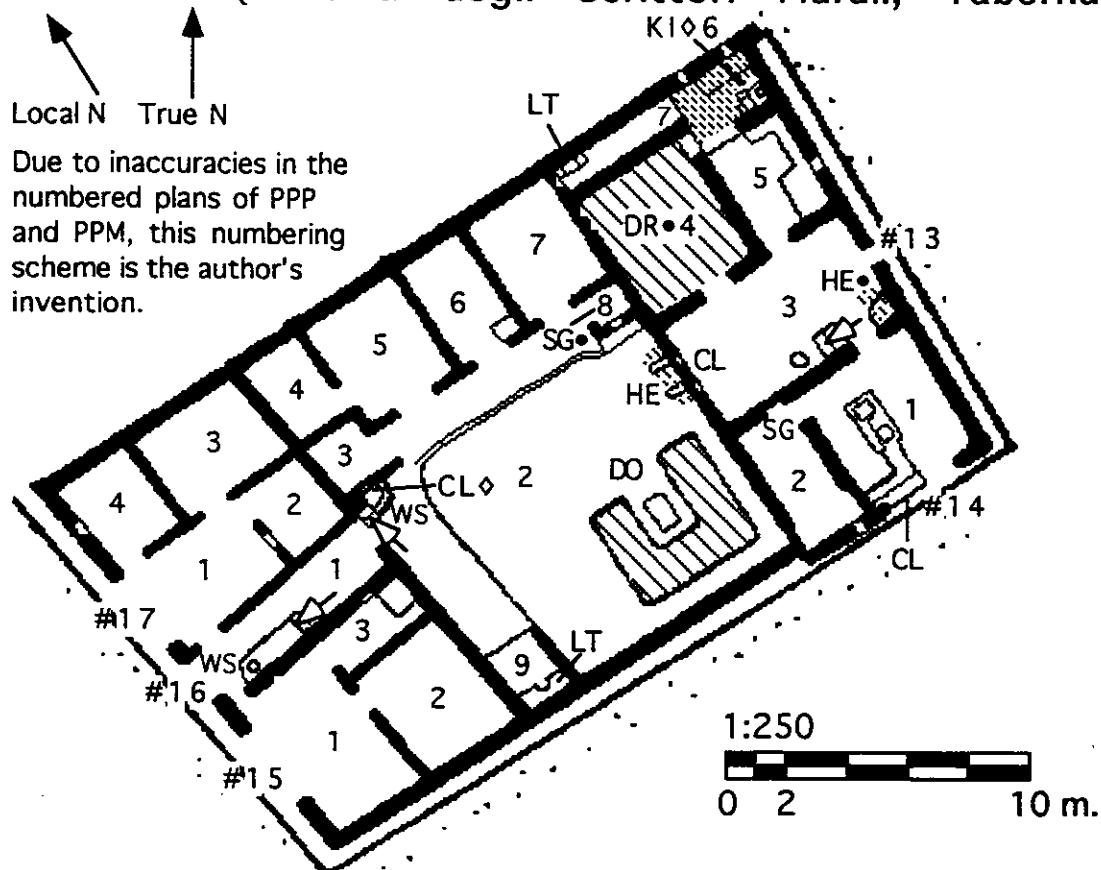
Detailed microanalysis plan of the Casa di M. Fabius Amandus I.7.2-3, the Officina Vasaria di Corinthus I.7.4, the Casa di Philippus I.7.5, the Taberna di Primilla I.7.6, the Casa del Sacerdos Amandus and the Popina I.7.8-9 (after CTP III).

## POMPEII I.7.10-12 (Casa dell'Efebo)



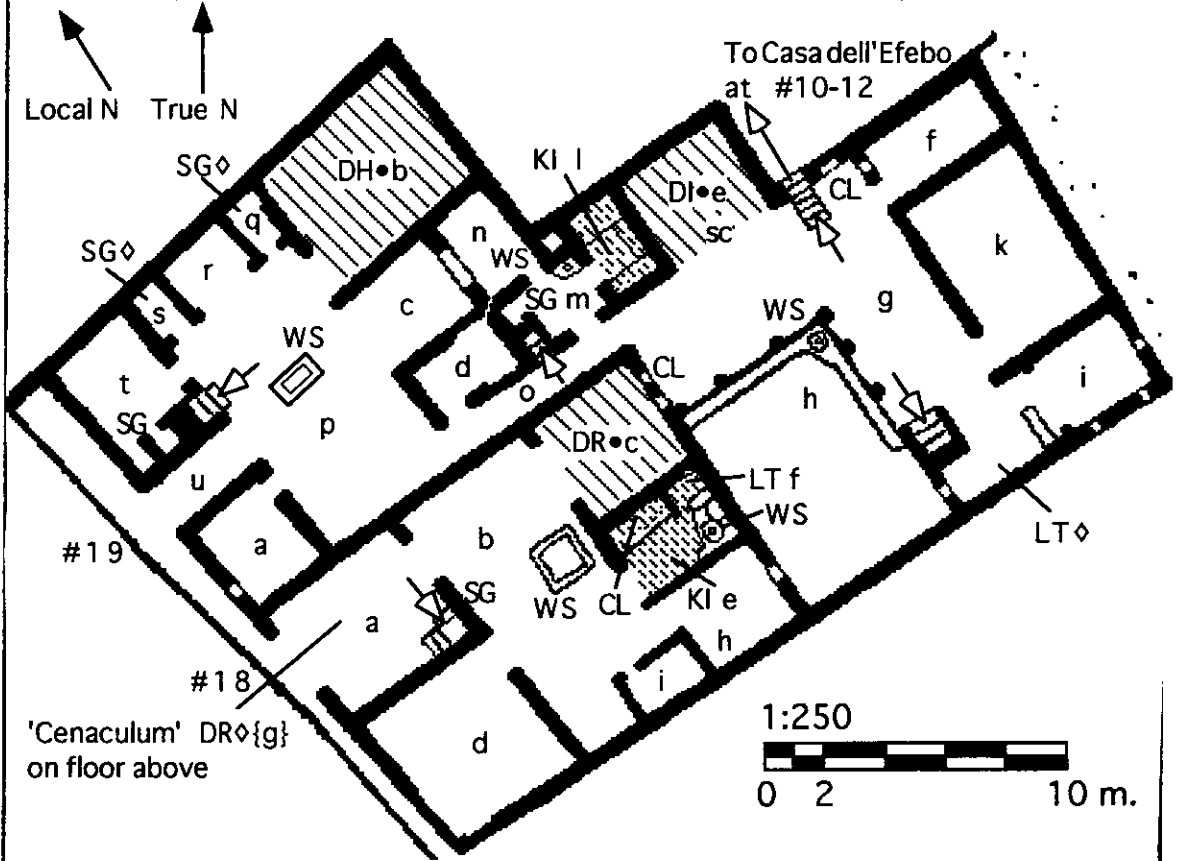
5.21 Detailed microanalysis plan of the Casa dell'Efebo I.7.10-12 (after CTP III).

POMPEII I.7.13-14 (Caupona di Masculus);  
I.7.15-17 (Officina degli Scrittori Murali, Tabernae)



5.22 Detailed microanalysis plan of the Caupona di Masculus I.7.13-14 and the Officina + Tabernae degli Scrittori Murali I.7.15-17 (after CTP III).

POMPEII I.7.18 (Taberna di Niraemius);  
I.7.19 (Casa annessa alla Casa dell'Efebo)



5.23 Detailed microanalysis plan of the Taberna di Niraemius I.7.18 and the Casa annessa alla Casa dell'Efebo I.7.19 (after CTP III).