



5.100 Taberna di Niraemius I.7.18: view E in kitchen (e) past stove, left, to work bench, basin and cistern head, right, and latrine, left, in area (f).



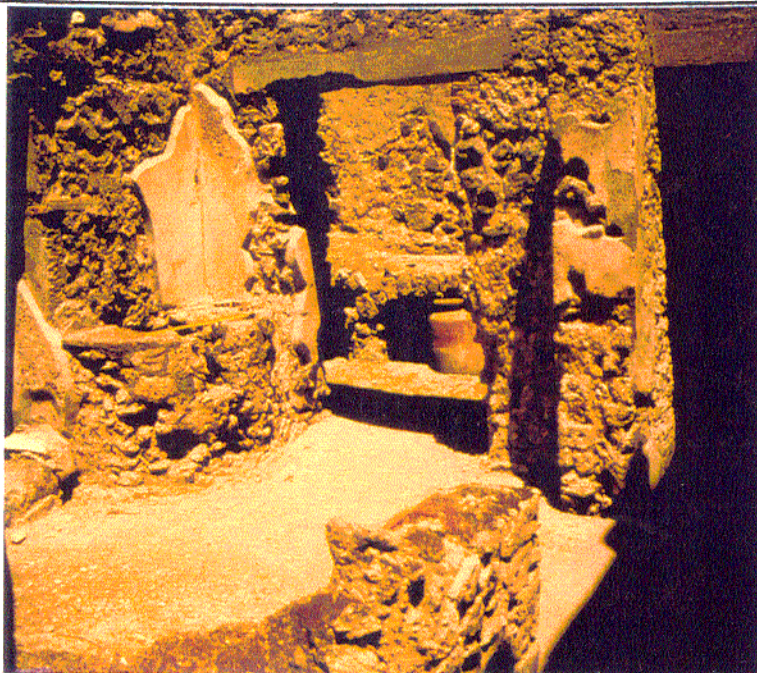
5.101 Taberna di Niraemius I.7.18: detail N of the stove in kitchen (e). Scale 0.50 m.



5.102 Taberna di Niraemius I.7.18: detail N of the painted ritual scene above the stove in kitchen (e), showing a ham on the left and a Genius sacrificing at an altar, holding a cornucopia at center. Scale 0.50 m.



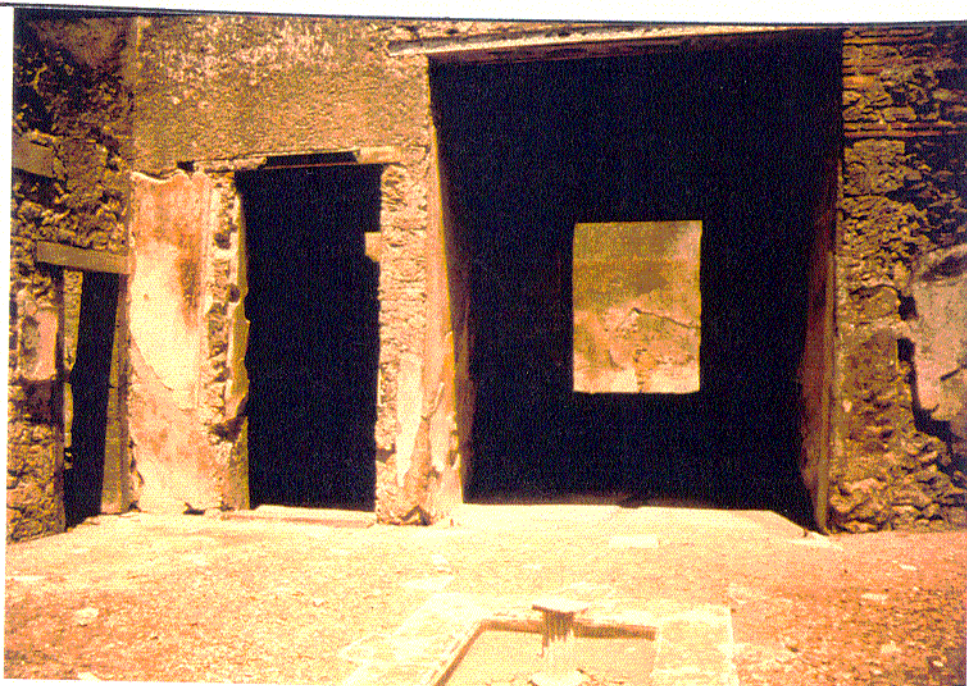
5.103 Taberna di Niraemius I.7.18: view E from entry (a) across atrium (b) to dining room/tablinum (c). Entrance to the kitchen (e) is to the right.



- 5.104 Casa annessa alla Casa dell'Efebo I.7.19: view NE in room (m) to the door to kitchen (l). Left of the door is a high counter with a built-in basin. The space in the far lower left is the location of a stair to the upper floor, with a storage space below.



- 5.105 Casa annessa alla Casa dell'Efebo I.7.19: detail S at one of the arches of the stove in kitchen (l). Scale 0.50 m.



5.106 Casa annessa alla Casa dell'Efebo I.7.19: view E in atrium (p) at tablinum (c), center with a wide door, and dining hall (b), left, with a narrow door.



5.107 Casa annessa alla Casa dell'Efebo I.7.19: view SE within dining hall (b).



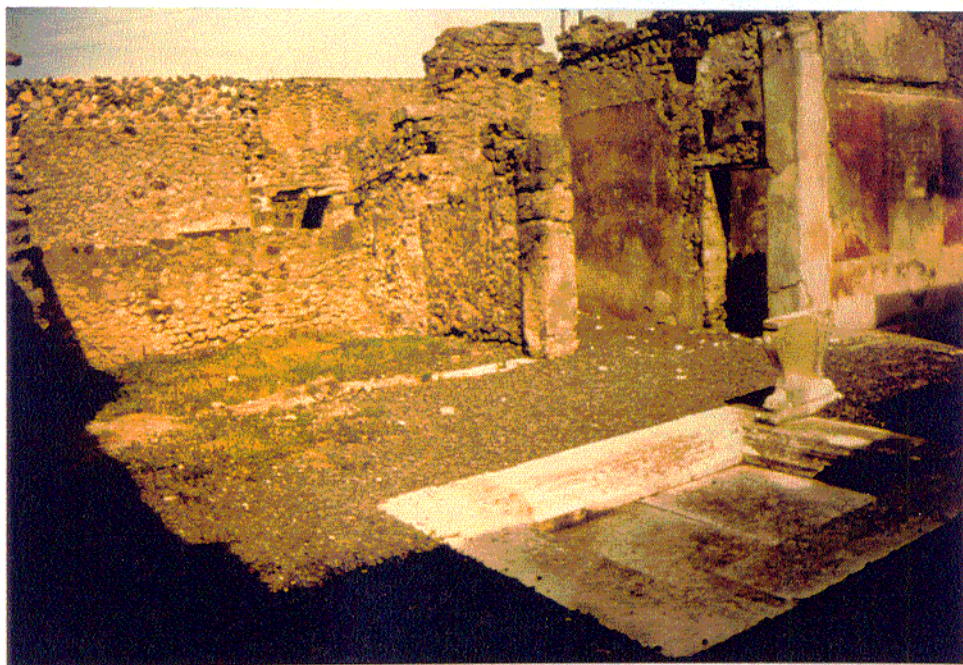
5.108 Popina di Stephanus I.8.1: view SW at serving counter, and the former location of a hearth, with a niche shrine behind.



5.109 Casa di Stephanus I.8.1-3: view S through dining room (8) towards peristyle garden (10).



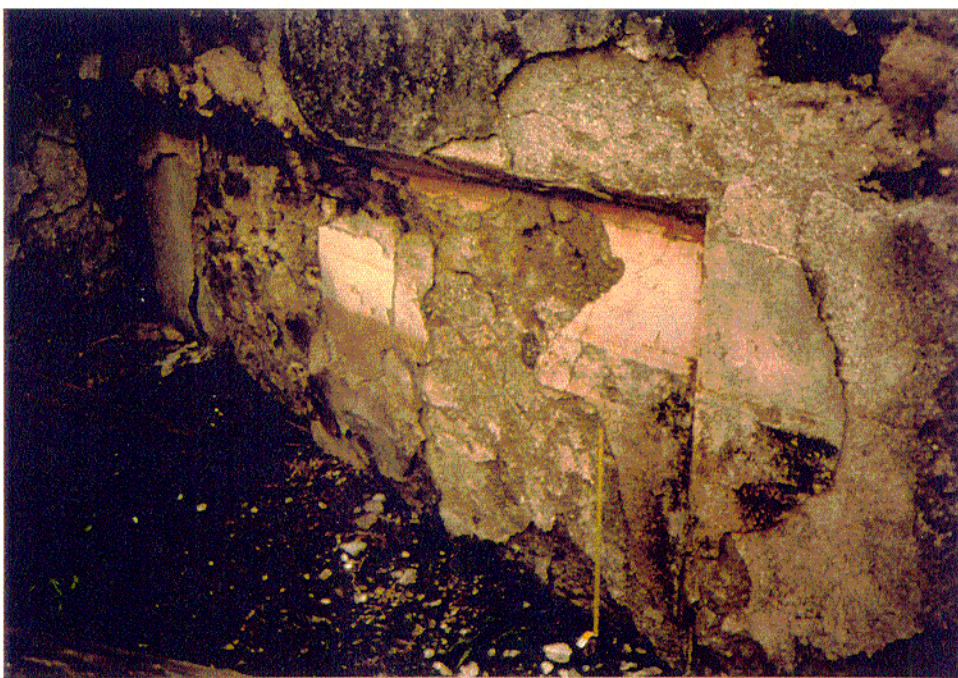
5.110 Casa della Statuetta Indiana I.8.4-6: detail NE at double-arched stove in corridor (14).
Scale 0.50 m.



5.111 Casa della Statuetta Indiana I.8.4-6: view SE across atrium (2) towards dining room (3).



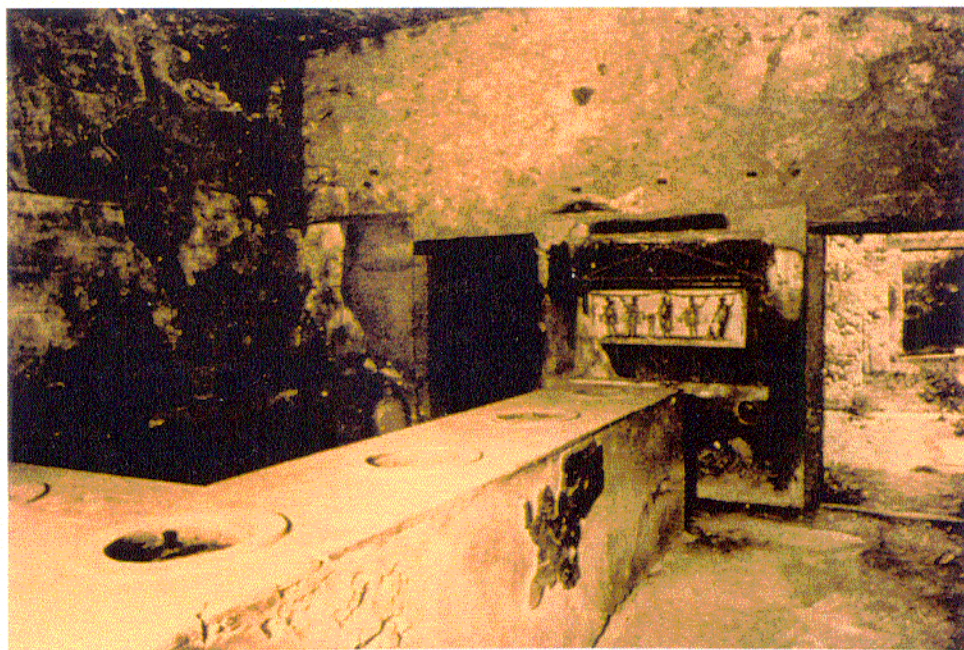
5.112 Casa della Statuetta Indiana I.8.4-6: view N from dining room (13) across garden (8) to dining room (7) at back right.



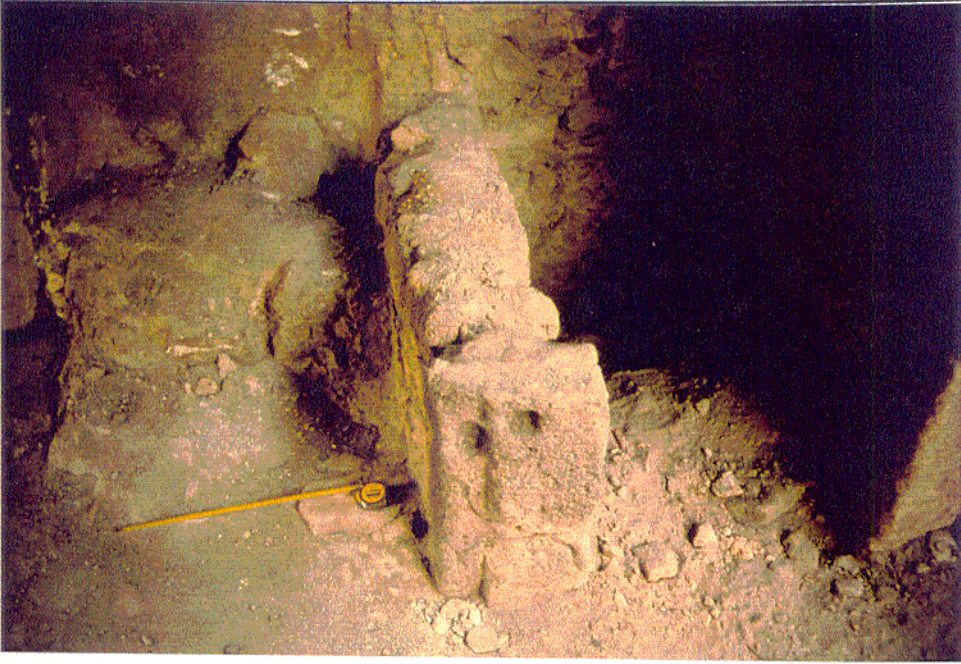
5.113 Casa della Statuetta Indiana I.8.4-6: detail SW at couch niche in W wall of dining room (13). Scale 0.50 m.



5.114 Taberna I.8.7: view S into the (work)shop, with base for stairs in the SW corner. Scale 0.50 m.



5.115 Caupona di L. Vetutius Placidus I.8.8: view SE at front serving counter, with painted shrine and entrance to dining room (2) behind (Castiglione Morelli del Franco & Vitale 1989, 193, Fig. 8).



5.116 Caupona di L. Vetutius Placidus I.8.8: detail W at hearth (left) and latrine (right) in the NW corner of the front room (1). Scale 0.50 m.



5.117 Casa di L. Vetutius Placidus I.8.8-9: view N in dining room (10) with couch niches back left and back right.



5.118 Casa di L. Vetutius Placidus I.8.8-9: view S at the masonry couches of the outdoor dining area under a bower in garden (11).



5.119 Casa di Pulcinella I.8.10: view NE at the stove in kitchen [9]; two windows open out onto the street above the stove.



5.120 Casa di Pulcinella I.8.10: view NE from dining area (3) through the colonnaded garden towards the door to kitchen [9].



5.121 Officina di A. Granius Romanus I.8.13: view S at the support for a hearth of sub-type (2) behind the latrine at the SW corner of court (1). Scale 0.50 m.



5.122 Officina di A. Granius Romanus I.8.13: view SW across court (1) to the hearth and latrine, left, and the arcuated shrine, right.



5.123 Casa di M. Epidius Primus I.8.14: detail N at the partially buried stove in kitchen (11).



5.124 Casa di M. Epidius Primus I.8.14: view S within dining room (6).



5.125 Caupona di N. Fufidius Successus I.8.15-16: view SE at serving counter with hearth at right and niche shrine in the wall behind (Castiglione Morelli del Franco & Vitale 1989, 209 Fig. 24).