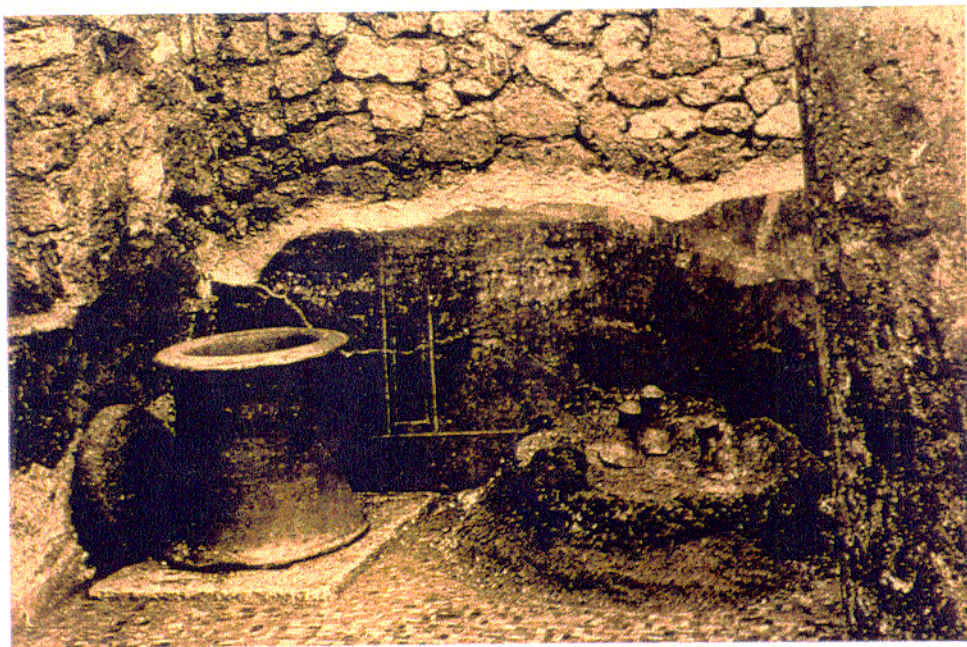




- 5.152 Casa di Cerere I.9.13: view SW at collection of cooking and storage wares and cooking grate in that corner of the atrium, next to the masonry bench used for cooking along the W side of the atrium (PPM II, 187, #23).

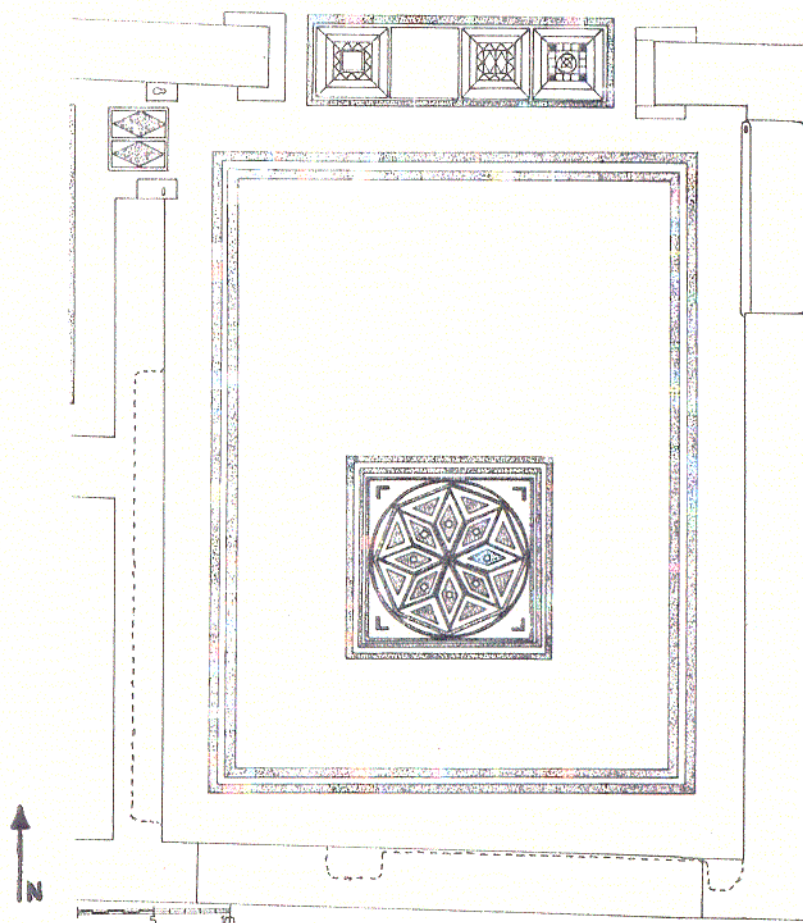


- 5.153 Casa di Cerere I.9.13: view W at puteal and brazier with amphora legs as cooking supports in the SW corner of court (o) (PPM II, 212, #62).



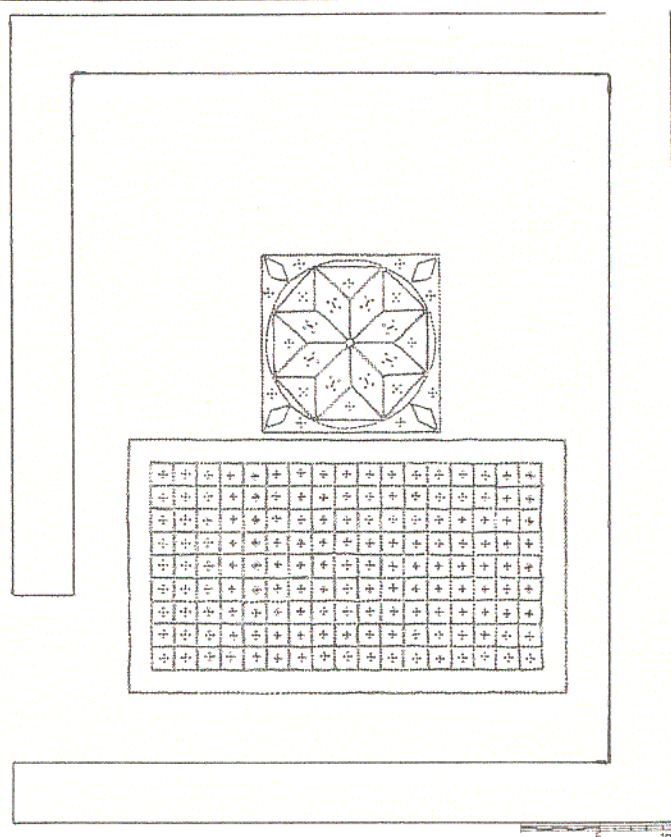


5.154 Casa di Cerere I.9.13: view S within dining room (d); couch niche lower left.



5.155 Casa di Cerere I.9.13: Plan of mosaic floor and couch niches of tablinum/dining room (j) (De Vos 1976, 221, Plate 46, Fig. 21).





5.156 Casa di Cerere I.9.13: Plan of 'T' pattern mosaic floor indicating the location of couches in dining room (m). North at top (De Vos 1976, 228, Plate 50, Fig. 26).

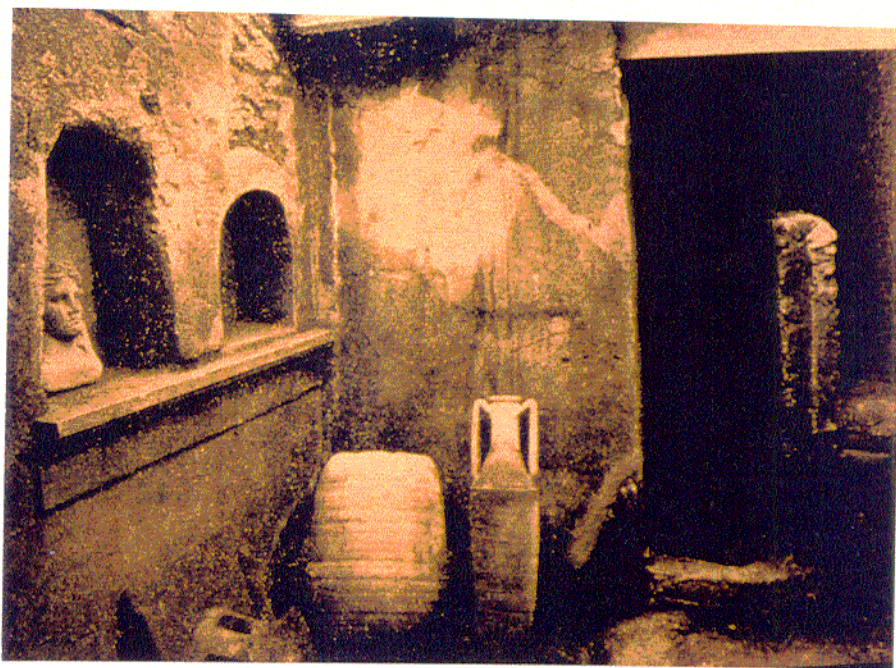


5.157 Casa I.10.1: view S at tablinum/dinette (3) from entrance court (1).





5.158 Casa I.10.1: view W at stove, right and latrine, left, in kitchen (5). There is a niched shrine in the N wall at right. Scale 0.50 m.

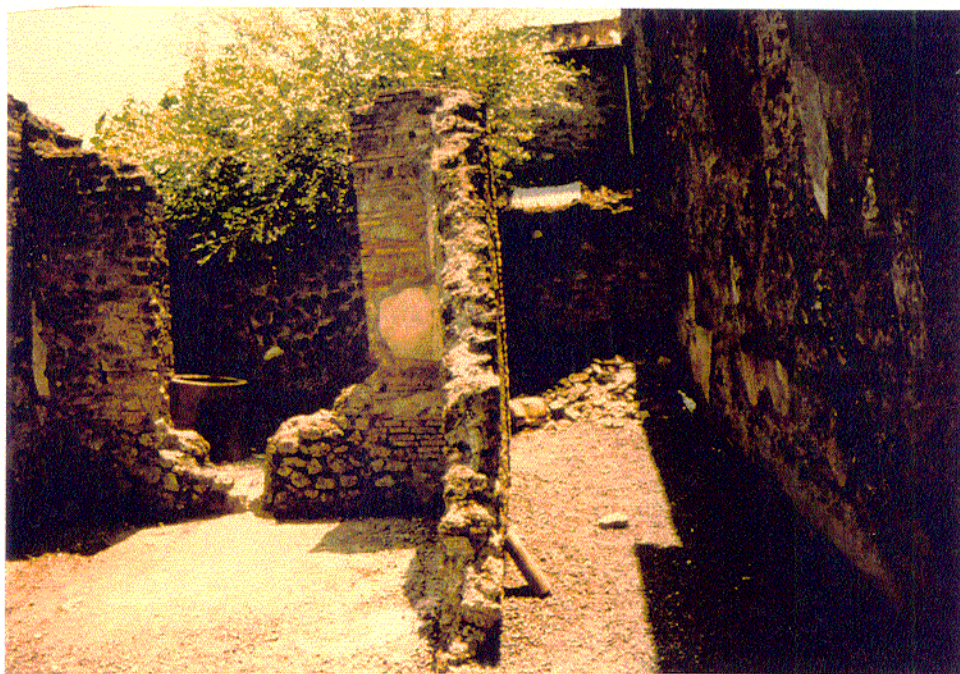


5.159 Casa I.10.1: view SW at niched shrines in S wall of kitchen (5), the nearer containing a terracotta bust of Ceres (Elia, NSc 1934, 268, Fig. 3).





5.160 Casa di Coponia I.10.2-3: view N from tablinum/ dinette (6) towards entrance.



5.161 Casa di Coponia I.10.2-3: view S from atrium at tablinum/ dinette (6) and corridor to back garden.







5.163 Casa del Menandro I.10.4: view E into dining hall (18); sondages under the floor reveal earlier phases.



5.164 Casa del Menandro I.10.4: View SW at niche shrine and podium in area (25), the niche containing casts of rough figurines.





5.165 Casa del Menandro I.10.4: view N within atrium (41) at hearth and niche shrine at back left, near the door to court (44).



5.166 Upstairs Apartment and Fullonica I.10.5-6: view W at storage niches under the stair at center, and work basins at left.





5.167 Casa del Fabbro I.10.7: view W at kitchen area (11) under stairs to the upper floor. Entrance to dining room (8) at right (Conticello 1987, 33).



5.168 Casa del Fabbro I.10.7: view N within dining room (8).





5.169 Casa del Fabbro I.10.7: view N into dining room (9); niche shrine up in the wall at right.



5.170 Casa del Fabbro I.10.7: view NW in dining room (9) at time of excavation. Two skeletons huddled around remains of a dining couch at the couch niche (Elia, NSc 1934 286, Fig. 10).





5.171 Tessitoria di Minucius I.10.8: view NE through atrium (1) to dinette (2).



5.172 Tessitoria di Minucius I.10.8: view N in corridor (9) at the stove at the time of excavation (Elia NSc 1934, 315, Fig. 27).





5.173 Tessitoria di Minucius I.10.8: detail N at present remains (support wall and beam holes) of stove in corridor (9). Scale 0.50 m.



5.174 Tessitoria di Minucius I.10.8: view N in dining room (10).





5.175 Casa degli Amanti I.10.10-11: view E in kitchen (16) at solid stove and niche shrine in the facing wall.



5.176 Casa degli Amanti I.10.10-11: view NW from kitchen (16) into peristyle (9) with cistern head in the foreground.





5.177 Casa degli Aufidii I.10.18: view N along street facade, with part of the upper floor dining room {11} hanging over the street like a balcony.



5.178 Casa degli Aufidii I.10.18: detail S at stove in kitchen (9). The painted shrine, now nearly faded away, was located up and to the right of the stove. Scale 0.50 m.